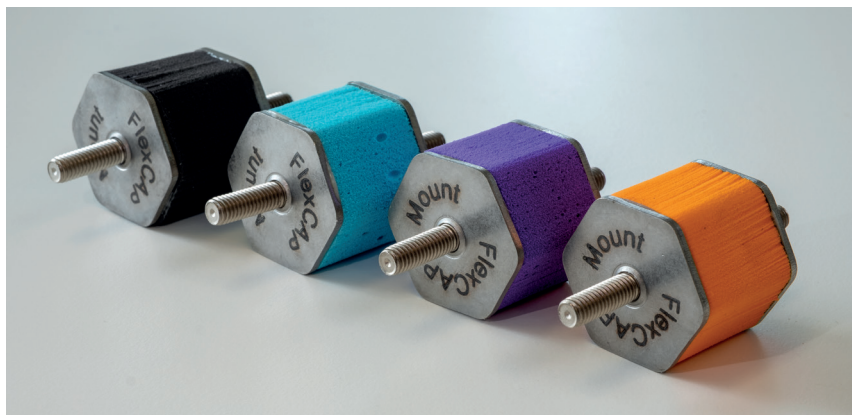


SMART DESIGN

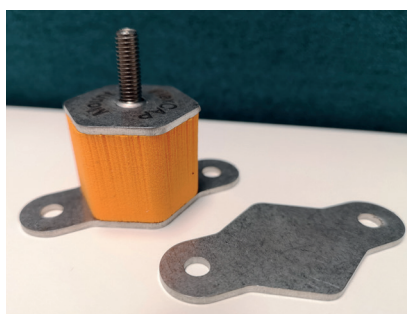
These easy-to-fit mounts are developed for small equipment on board yachts. They are available in four types of resilient polyurethane elastomer. Each colour indicates the maximum allowable supported weight. The hexagonal shaped stainless steel base allows easy installation in a blind tapped fixation using a M20 wrench.

MOUNT SELECTION

The table below shows the workable load range of the FlexCAP mounts. To select the correct mount one has to check the total weight to be supported and the amount of mounting points. The next step is to calculate the weight per mount and to determine the disturbing frequency. On our website you will find more information concerning mount selection and installation.



	BLUE	PURPLE	BLACK	ORANGE
Load range (kg/mount)	0.5 - 2	2 - 4.5	4 - 5.5	5.5 - 8.5
Load per mount (kg/mount)	0.5 1 2	2.5 3.5 4.5	4.5 5 5.5	5.5 7 8.5
Compression at load (mm), approx.	0.5 0.9 3.9	1.0 1.9 2.7	3.0 3.5 4.0	1.9 2.7 3.4
Reduction starts at (Hz) approx.	> 22 > 15 > 12	> 20 > 18 > 15	> 18 > 16 > 15	> 22 > 20 > 18



OTHER INSTALLATION OPTIONS

In addition to the FlexCAP mount with a dual side M6 thread, we also developed a flat base option with a single M6 thread for other installation different options.

FlexCAP mount

Van Cappellen Sound solutions is proud to present acoustic solution products after years of experience providing specialist consultancy services in the marine industry.

To provide a mounting solution for small equipment on board we developed an unique vibration isolator mount.



Image with courtesy of Southern Wind Shipyard (Pty) Ltd.

CONTACT

Sandor Matla and Aron den Hollander

De Wederik 12
3355 SK Papendrecht
The Netherlands
T (31) 78 200 13 44
info@vancappellensolutions.com
vancappellensoundsolutions.com